

AIR LOGISTICS CORPORATION

200/250 FUELING SYSTEM MODULE

AIR LOG® PART NUMBER 118463



The FSM is an updated version of a design with 25+ years of continuous and successful service with Special Operations and Airborne units, and has significant functional improvements.

The configuration has been optimized for:

- Parachute delivery and field transport: A reinforced frame and simplified design, with three load-bearing tubes, make best use of proper rigging techniques to minimize shock loads to system components on landing and in transport by vehicles or aircraft.
- Choice of 2" or 3" dry-break connectors and hoses, without degrading system performance.
- Minimum envelope to allow carriage and operation from Humvee or similar vehicles to move fueling capacity rapidly when on the ground. Unit can also be operated from the ramp of a cargo aircraft.
- Reliability and world-wide spare parts availability by using modern, well-proven, off-the-shelf components.
- Starting: Recoil starter eliminates weight, cube and complexity of battery and starter motor. Cold weather assist is via MRE heat pack-plentiful in the field, another simplification for the user.
- Integrated package: Connect to fuel source, distribution hoses and start. Filtered or bulk fuel delivery at 200 or 250+ US gallons (756 or 946 liters) per minute. Valves included to defuel hoses and unit into a fuel source without changing hoses. Man-portable in the field for short distances without disassembly of the unit. Minimum time to land, "go operational" and depart the fueling point.

SPECIFICATIONS:

Length: 43.5 inches (1.11m)

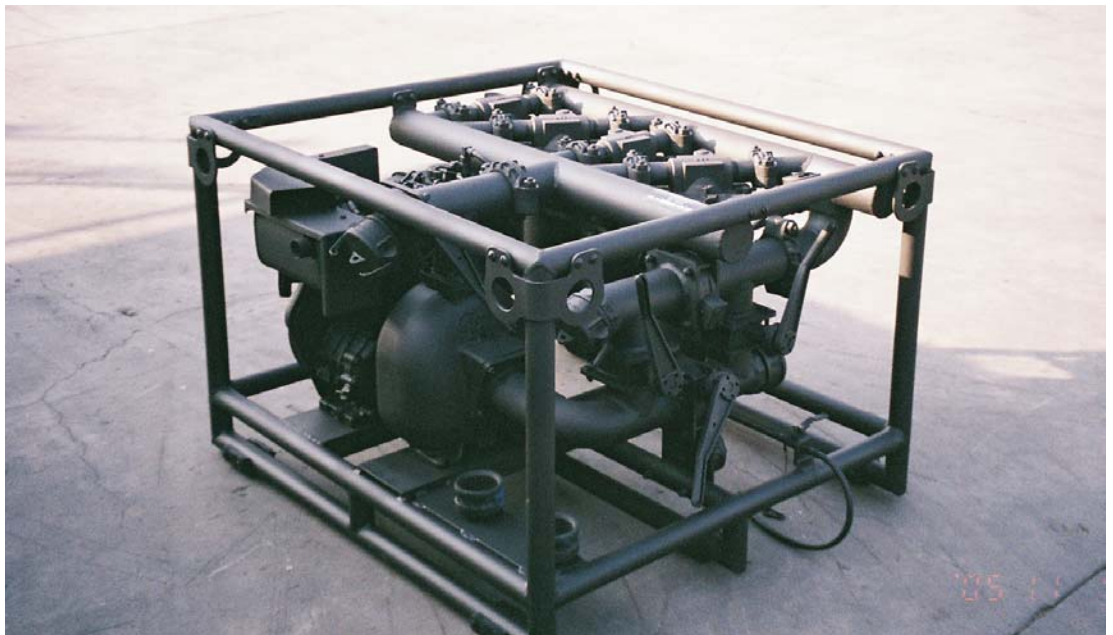
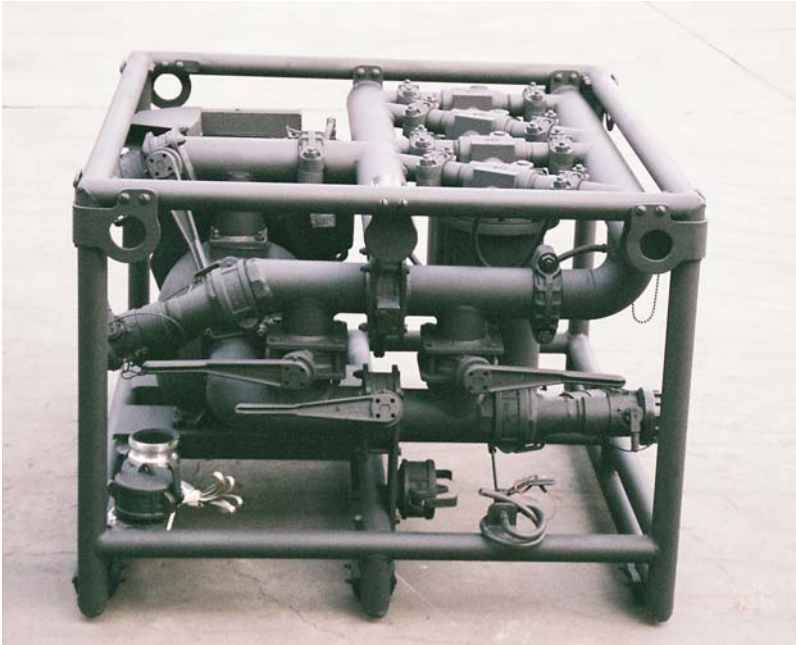
Height: 30.3 inches (.77m)

Width: 40.5 inches (1.03m)

Weight: Dry-420 lbs. (190.9 kg)

Wet-440 lbs. (200 kg)

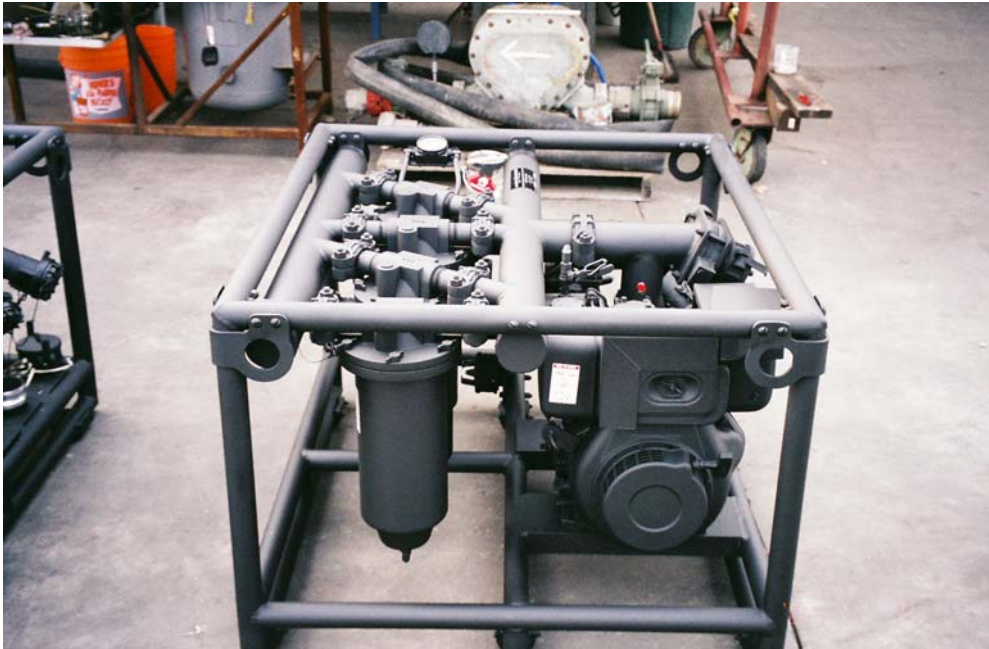
AIR LOGISTICS CORPORATION
200/250 FUELING SYSTEM MODULE
AIR LOG® PART NUMBER 118463



AIR LOGISTICS CORPORATION

200/250 FUELING SYSTEM MODULE

AIR LOG® PART NUMBER 118463



AIR LOGISTICS CORPORATION

WWW.AIRLOG.COM

146 RAILROAD AVENUE MONROVIA CA 91016

626 . 256 . 1257 FAX: 626 . 359 . 1689